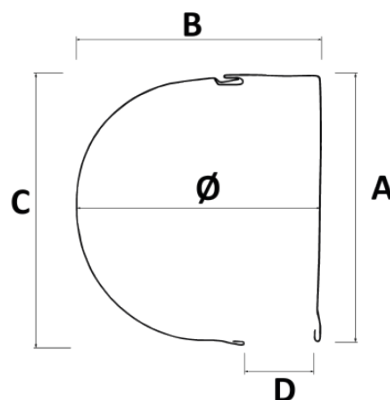
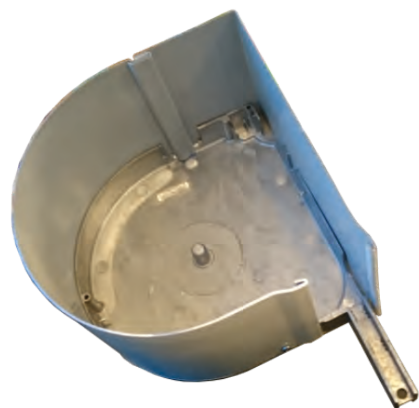


BOX 1/2 ROUND COFFRE 1/2 ROND



TECHNICAL DATA CARACTÉRISTIQUES TECHNIQUES

POLYAMIDE	NORM.	VALUE
Thickness Épaisseur peinture	EN 13523-1	22±2µ
Gloss (60%) Brillance (60%)	EN 13523-2	Matt-Matt 10-20% Middle gloss-Brillance moyenne 30-60% Gloss-Brillance >80%
Control color Contrôle de la couleur	EN 13523-3	-
Pencil Hardness Dureté au crayon	EN 13523-4	H - 2H
T Bending test Tes de pliage en T	EN 13523-7	0T - 1T
Rubbing Test. Mek test Test de frottement.	EN 13523-11	100 - 120 D.F.
Acetic salt spray Sel acétique	EN ISO 9227 AASS:2012	1000 hours/heures

SIDE ONE FACE 1	POLYURETHANE POLYAMIDE POLIÉSTER
SIDE TWO FACE 2	EPOXY POLIÉSTER

ALUMINIUM PROPERTIES PROPRIÉTÉS DE L'ALUMINIUM	
ALLOY ALLIAGE	3005
THICKNESS ÉPAISSEUR	0,7 - 1,0 MM
HARDNESS DURETÉ	H44 - H22

HEIGHT OF ROLLER SHUTTERS IN BOXES ENROULEMENTS EN CM.

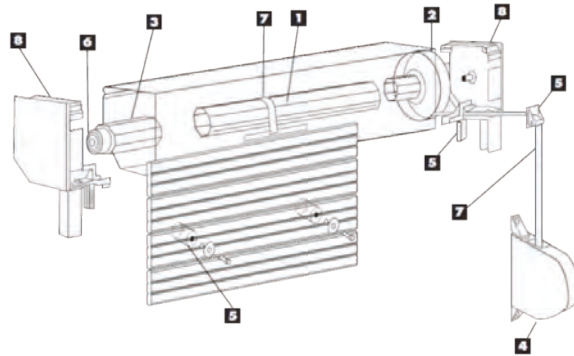
SLATS LAMES	39 mm			40C mm			40+ mm			43 mm			43+ mm			45C mm			45 mm			45Pmm		
AXIS AXES	40	60	ZF54	40	60	ZF54	40	60	ZF54	40	60	ZF54	40	60	ZF54	40	60	ZF54	40	60	ZF54	40	60	ZF54
ALU. 1/2 ROUND 137	152	148	117	160	160	124	168	160	144	150	159	137	150	159	137	148	144	99	112	130	103	81	81	63
ALU. 1/2 ROUND 150	198	179	148	200	200	168	208	192	184	193	185	172	193	185	172	180	180	135	148	166	126	108	99	76
ALU. 1/2 ROUND 165	245	230	206	272	260	200	268	248	248	241	232	241	241	232	241	238	229	207	216	211	171	126	126	117
ALU. 1/2 ROUND 180	292	284	273	344	328	284	332	316	324	305	297	314	305	297	314	310	288	270	274	261	225	171	166	140
ALU. 1/2 ROUND 205	393	386	343	440	432	380	444	420	420	404	396	404	404	396	404	391	400	395	373	360	315	225	243	215
ALU. 1/2 ROUND 250	-	-	-	-	-	-	-	-	-	-	-	-	-	-	-	-	-	-	-	-	-	-	-	-
ALU. 1/2 ROUND 300	-	-	-	-	-	-	-	-	-	-	-	-	-	-	-	-	-	-	-	-	-	-	-	-

SLATS LAMES	50 mm			50+ mm			51+ mm			55C mm			55E mm			55I+ mm			77C mm	
AXIS AXES	40	60	130	ZF54	40	60	ZF54	60	ZF54	60	70	ZF54	60	70	ZF54	60	70	ZF54	70	130
ALU. 1/2 ROUND 137	95	90	-	85	110	105	105	90	95	99	-	-	-	-	-	-	-	-	-	-
ALU. 1/2 ROUND 150	140	130	-	110	155	140	135	130	135	120	-	-	-	-	-	-	-	-	-	-
ALU. 1/2 ROUND 165	165	155	-	145	200	185	200	175	180	165	-	-	-	-	-	-	-	-	-	-
ALU. 1/2 ROUND 180	230	220	-	195	255	235	245	225	230	220	209	-	-	-	-	-	-	-	-	-
ALU. 1/2 ROUND 205	300	300	-	260	340	330	315	315	310	286	275	-	-	-	-	-	-	-	-	-
ALU. 1/2 ROUND 250	-	450	320	470	430	320	470	-	-	-	-	357	357	302	357	363	643	251	238	
ALU. 1/2 ROUND 300	-	-	-	-	-	-	-	-	-	-	-	533	533	407	539	539	891	320	280	

MANUFACTURING FEATURES CARACTÉRISTIQUES DE CONSTRUCTION

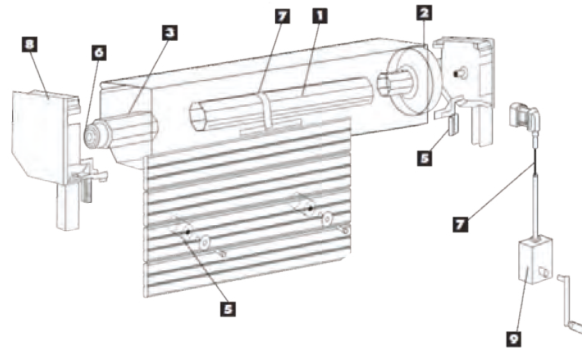
	1/2 ROUNDED 1/2 ROND	
Manufacturing length Fabrication longue	6	ml
Packing Emballage		
125 - 205	30	ml
230 - 250	18	ml
300 - 400	12	ml

ROLLER SHUTTER WITH COILER
VOLET ROULANT AVEC ENROULEUR



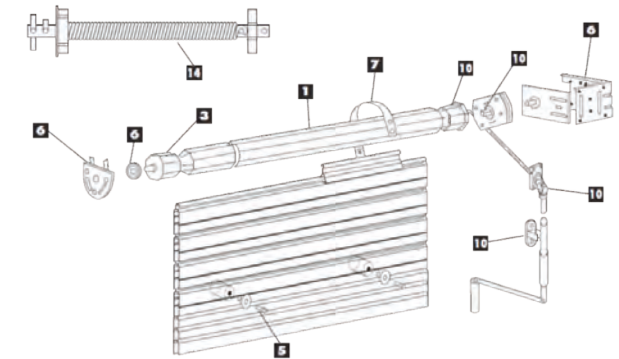
1. Axle
2. Pulley
3. Octagonal cap
4. Coiler
5. Stap guide / stoppers / entry guide
6. Support plate for ball bearing
7. Strap guide / strap / security spring
8. End caps

ROLLER SHUTTER WITH WINCH
VOLET ROULANT AVEC TREUIL



1. Axle
2. Pulley
3. Octagonal cap
4. Stap guide / stoppers / entry guide
5. Support plate for ball bearing
6. Strap guide / strap / security spring
7. End caps
8. Winch

ROLLER SHUTTER WITH CARDAN
VOLET ROULANT AVEC CARDAN



1. Axle
2. Octagonal cap
3. Stap guide / stoppers / entry guide
4. Support plate for ball bearing
5. Strap guide / strap / security spring
6. Cardan
7. Compensation spring